



DesignTO Festival 2026

# HOST VENUE INFORMATION PACKAGE

For use in conjunction with the *Call for Guest Designers*.

This document is organised by the three (3) types of venue spaces available:

- A window installation runs the whole duration of Festival Week, and is visible to the public 24 hours a day from the outside of your venue. Depending on the space, the installation may also be viewable from inside your venue during regular business/gallery hours. **See venues # W1 - W28.**
- An event runs one day during Festival Week, for a set period of time. For example, events can include a talk, tour, product launch, film screening, party, or workshop. **See venues # V1 - V11.**
- An exhibition runs more than one day during Festival Week. It is open to the public during regular business/gallery hours, and may include a window component. It can start before Festival Week and/or end after Festival Week. It may also include an opening or closing reception, or artist/designer's talk. **See venues # X1 - X19.**

**Please identify your top 3 venue choices with your submission.**

We will try our best to pair you with one of these choices. Please note that while we try our best to create successful outcomes for all artists/designers, we are not able to guarantee that everyone will be paired.

Email any questions to Programs Assistant Markhan Hussain at [markhan@designto.org](mailto:markhan@designto.org) with this subject line: **Artist/Designer Call + your name.**

Version 4 - August 2025

DesignTO Festival | January 23 - February 1, 2026 | [DesignTO.org](http://DesignTO.org)

## WINDOW INSTALLATION

A **window installation** runs the whole duration of Festival Week, and is visible to the public 24 hours a day from the outside of your venue. Depending on the space, the installation may also be viewable from inside your venue during regular business/gallery hours.

# W1. gravitypope

1010 Queen Street West

Window Installation

Barrier-free venue / wheelchair accessible from the street

**Description:** The available window is facing Queen Street West near the corner of Ossington. The vestibule is rectangular. The ceiling area is open and slightly larger than the top of the window frame. There is a power outlet available. Small light fixtures are hanging down into the space.

**Dimensions:** Vestibule = 27" D x 190.75" W x 97.5" H

**Preference:** Prefer artists who work in textiles, fashion, clothing, footwear, style, interior design, industrial design and patterns, but are open to new concepts as well.

**Website:** [www.gravitypope.com](http://www.gravitypope.com)



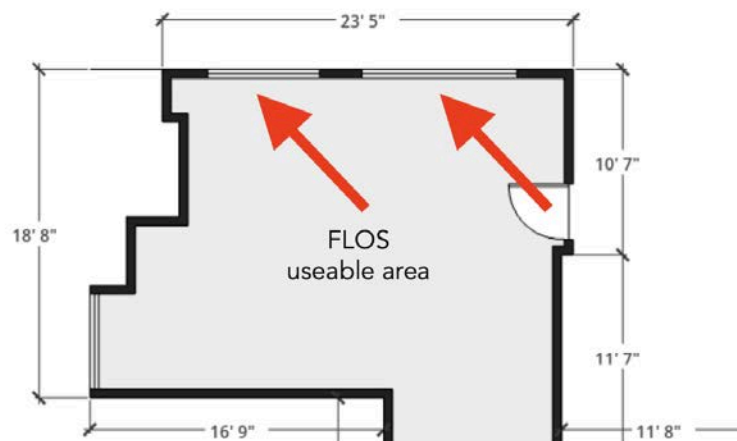
## W2. Lightform

267 Niagara Street  
Window Installation

**Description:** Offering two large street-facing windows

**Preference:** Prefer artists who work in industrial design, objects and furniture.

**Website:** <https://www.lightformshop.com>



## W3. Akb Architects

182D Street Helens Avenue

### Window Installation

Barrier-free venue / wheelchair accessible from the street

#### Dimensions:

Window = 8" W x 7" H

Window sill height from finished floor = 9"

Window sill depth = 5.25"

Clear area behind the window = 8" W x 4" D

Ceilings = 16" H with exposed trusses, offering the opportunity for something to be suspended.

Viewing area in front of window = 18" W by 9" D

**Preference:** Interested in projects that relate to architecture or themes that engage with nature. Open to a wide range of artistic work. The space is particularly well-suited for pieces that can be suspended from a high ceiling or positioned near or directly on the floor. While this submission is intended for a window display, there is also openness to the possibility of hosting a small exhibition.

**Website:** <https://www.akb.ca>



## W4. Storm Horse Tattoo

847 Dundas St. West (Main Floor)

### Window Installation

Barrier-free venue / wheelchair accessible from the street

**Description:** A large window right beside the sidewalk at street level.

**Dimensions:** 56"W x 144"H x 6"D

**Preference:** Any type of work that fits the available dimensions will be considered. Minimal floor space access to the window display can be provided from the interior.

**Website:** [Stormhorsetattoo.com](http://Stormhorsetattoo.com)



## W5. Cafe Pastel

862 Dundas Street West

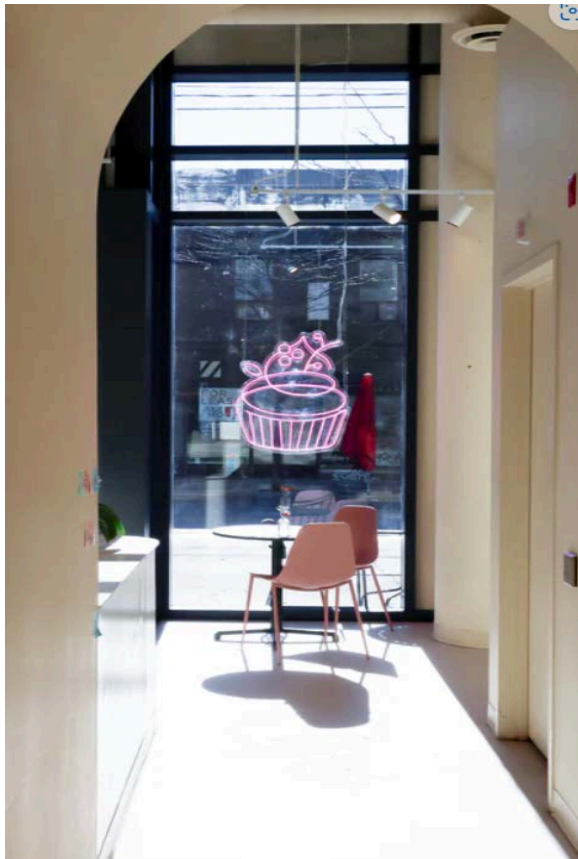
Window Installation

Barrier-free venue / wheelchair accessible from the street

**Description:** Adjacent walls and floor areas next to the windows (preferably one side of the cafe).

**Dimensions:** 12ft high windows with mullions every 1.5m

**Website:** <https://www.pastelbakes.com>



## W6. Milky's

760 Dundas St. W  
Window Installation

**Dimensions:**

2 windows = 54" W x 60" H each

About 6" clearance from window to seating

**Website:** [www.milkys.ca](http://www.milkys.ca)



## W7. Swipe Design | Books + Objects

401 Richmond Street West

Window Installation

Barrier-free venue / wheelchair accessible from the street

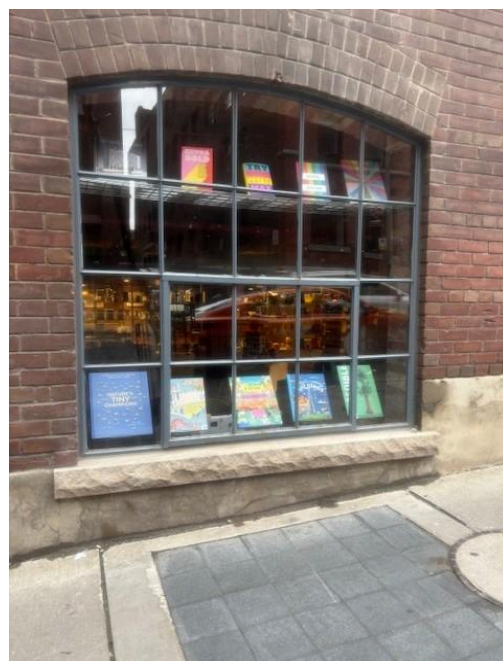
**Description:** Visible from the exterior on Richmond Street West

**Dimensions:**

Window = 73" H x 62" W. Located 3 feet above floor level inside the store, with a bookcase positioned between the base of the window and the floor.

**Preference:** Interested in work that is connected to store themes - good design, architecture, graphic design.

**Website:** [www.swipe.com](http://www.swipe.com)



## W8. The Drake Hotel

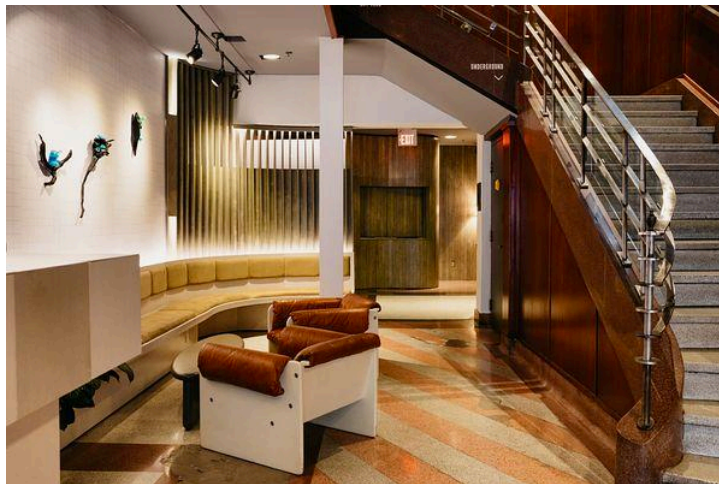
1150 Queen Street West

Window Installation

Barrier-free venue / wheelchair accessible from the street

**Description:** Many different exhibition spaces are available within the building of varying sizes.

**Website:** [www.thedrake.ca](http://www.thedrake.ca)



# W9. Engel & Völkers Toronto City

71 King St East

Window Installation

Barrier-free venue / wheelchair accessible from the street

**Description:** Large, expansive windows, with ample space for the window installation

**Dimensions:** Boardroom = 10' Room Floor-to-Ceiling Height and 2 large windows of equal measurements (8' H x 6' 10" W each)

Foyer/Entrance: 12' Room Floor-to-Ceiling Height and 2 large windows of equal measurements on either side of entry (9' 5" H x 4' 8" W each)

**Preference:** Happy to work with any artist. Will also host an event night showcasing the artist at the venue.

**Website:** <https://weareolea.com/>



## **W10. Intentionally Left Blank**

## **W11. Intentionally Left Blank**

## W12. La Palma

849 Dundas St. West

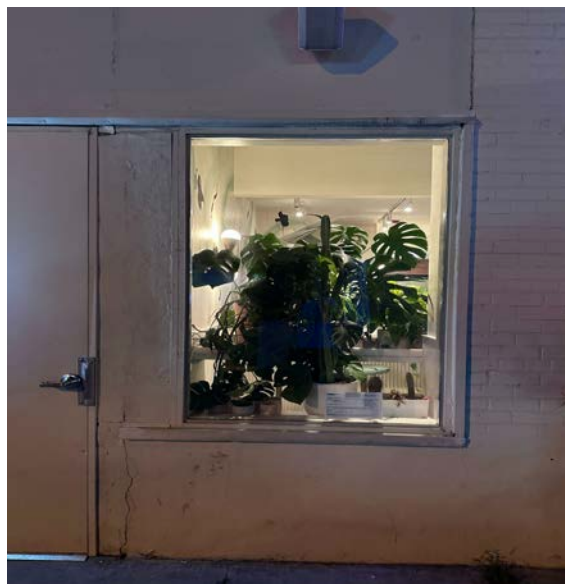
### Window Installation

Barrier-free venue / wheelchair accessible from the street

**Description:** Window to East of front door. It is an interesting window with a ledge running in front of it (dining room side), and the window sill below.

**Dimensions:** 1.6m (5'3") H x 1.16m (3'10") W

**Website:** <https://www.lapalma.ca/>



## W13. Worth Gallery

830 Dundas Street West

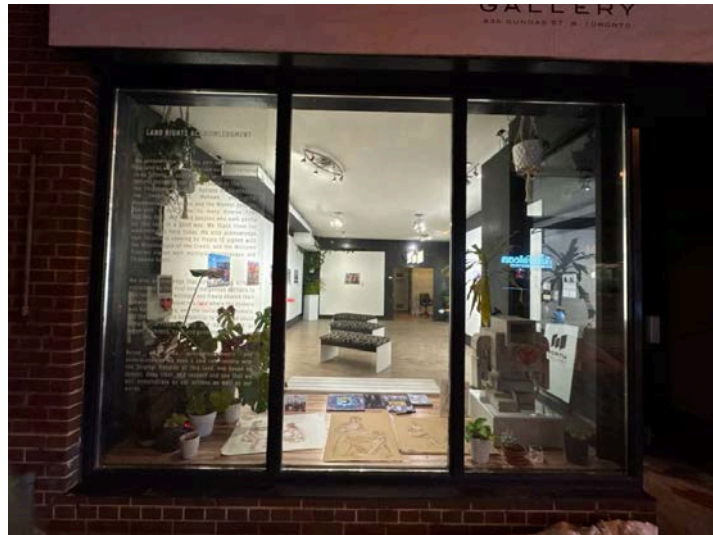
Window Installation

Barrier-free venue / wheelchair accessible from the street

**Description:** The window is located on the north side of Dundas Street West, facing the street and receiving significant foot traffic. The space also benefits from ample natural sunlight.

**Dimensions:** 11' H x 4' W

**Website:** <https://worthgallery.ca/>



# W14. Haworth Toronto Showroom

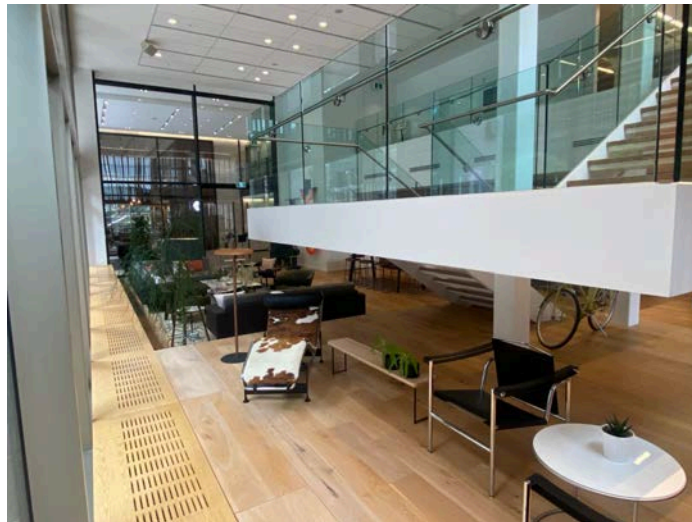
55 University Ave

Window Installation

Barrier-free venue / wheelchair accessible from the street

## Description:

**Area 1 University Ave:** This area faces University Avenue and is situated on the platform area in front of the stairs. As shown in the photos, there are slits on the floor—these are part of the HVAC system, which the platform is built over. While the platform is safe to walk on, designers/artists should ensure that the slits are not entirely covered, as air flows through them. This area can be combined with Area 2 to accommodate a larger installation. Please note that the window frame protrudes into the space.



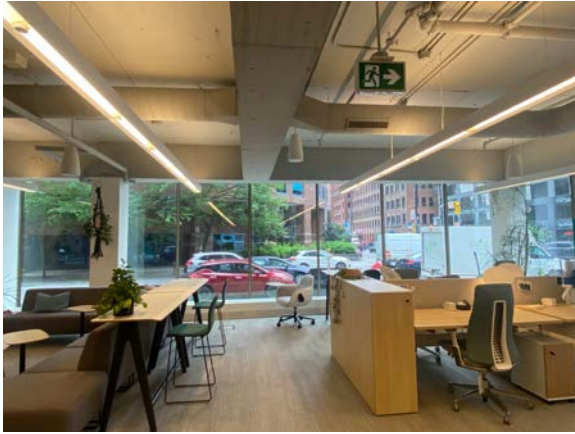
## Area 2 University Ave:

This area shares the same window as Area 1 and faces University Avenue. It is located at ground level and features the same HVAC system, encased in wood at the same height as the platform in Area 1. Artists should take this into account, as it does impact the usable floor space. Additionally, the window frame protrudes into the space.



**Area 3 Wellington Street:**

This area faces Wellington Street. A metal HVAC unit, approximately 1.5 feet in depth, sits on the floor in front of the window, which the artist will need to consider in their design. The window frame protrudes into the space, and there is a large TV screen next to the window that the artist is welcome to use.



**Dimensions:** Area 1 University Ave: 16" L x 5" W x 18" H

Area 2 University Ave: 33" L x 3" W x 18" H

Area 3 Wellington Street- 35" L x 3" W x 9" H

**Preference:** As a corporate furniture manufacturer and supplier, the company prefers that any installation does not compete with its products. A piece that leans more toward the artistic side may be more appropriate. The company's website provides a reference for the types of products it carries.

**Website:** <https://www.haworth.com/na/en.html>

## W15. Phila Optical

359 Roncesvalles Avenue

### Window Installation

Barrier-free venue / wheelchair accessible from the street

**Description:** The available storefront area includes two window panels, as well as access to the floor and ceiling. Hooks are available for hanging installations. A small table display for eyewear is currently positioned in the window and can be pivoted or adjusted as needed.

**Dimensions:** Window Area: 65" x 93" (5.4 ft x 7.8 ft)

There is some flexibility in sizing, as displays slightly larger than the window panels may still be visible and effective.

**Website:** [www.philaoptical.com](http://www.philaoptical.com)



# W16. Humber Fashion Institute

3166 Lakeshore Blvd. West (Etobicoke)

## Window Installation

Barrier-free venue / wheelchair accessible from the street

**Description:** The window space faces the sidewalk along Lakeshore Boulevard West. The side walls are made of white brick, and the ceiling features a metal grid.

**Dimensions:** 52' W x 8' H x 6' D

**Preference:** Fashion design



## W17. TK Creative

916 Ossington Ave

Window Installation

Barrier-free venue / wheelchair accessible from the street

**Description:** Store front window

**Dimensions:** 64" L x 84" H x 24" D

**Website:** <https://tkcreative.ca/>



# W18. Hot House Restaurant

35 Church Street

Window Installation

Barrier-free venue / wheelchair accessible from the street

**Description:** Open to hosting all three formats or just one. The space comprises three interconnected event areas that can be used separately or combined into one larger venue. A floor plan with measurements can be provided upon request. The Private Room includes a built-in TV, and the venue also offers an in-house screen and projector. Approximate standing/seating capacity: 140 people.

**Website:** <https://www.hothouserestaurant.com/>



# W19. Raw Design

22 Geary Avenue

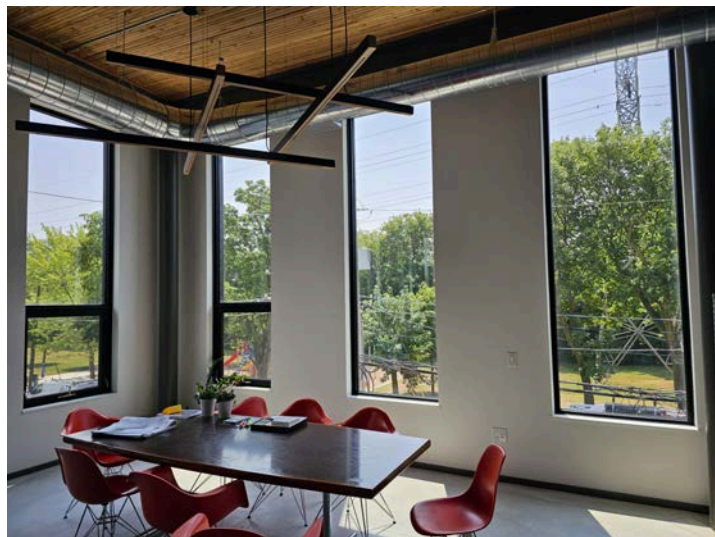
Window Installation

Barrier-free venue / wheelchair accessible from the street

**Description:** The space offers 23 windows. Space in front of windows (on the inside) is preferred not to be used to maintain use of space.

**Dimensions:** Each window is 37" W x 124" H

**Website:** [www.rawdesign.ca](http://www.rawdesign.ca)



## W20. Entro Communications

33 Harbour Square, Suite 202

### Window Installation

Barrier-free venue / wheelchair accessible from the street

**Description:** The space features three sets of windows spanning the width of the office, offering excellent visibility onto a green park area beside the Ferry Terminal—making it a high-exposure location. Inside, each window is backed by a seating area that includes a wall to the left, a couch, and a coffee table. These furnishings can be moved if necessary to accommodate an installation.

Outside, a large concrete pathway runs in front of the windows, providing ample space for public viewing of any display. The vinyl currently on the windows can be removed to allow for a clear and uninterrupted installation.

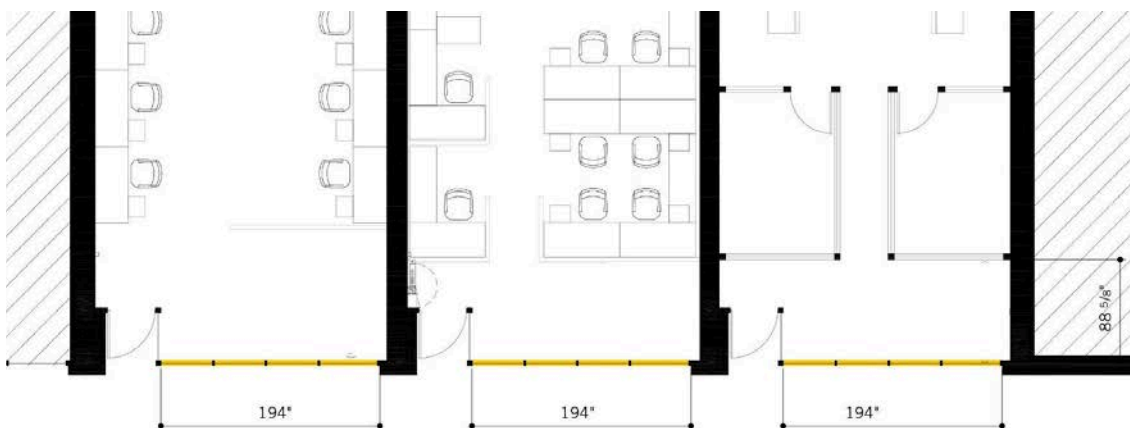
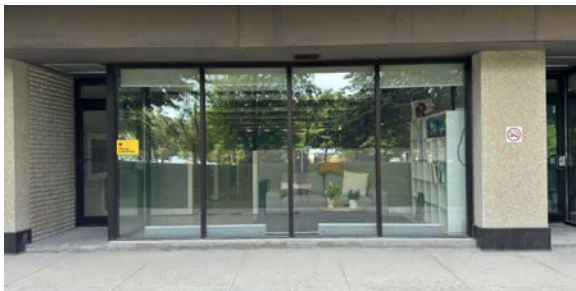
#### Dimensions:

Interior space behind windows: 201" W x 89" D

Window dimensions: 194" W x 108" H

Total windows: 3

**Website:** [www.entro.com](http://www.entro.com)



# W21. Sub-Zero, Wolf, and Cove Showroom

280 King Street East, Suite 101

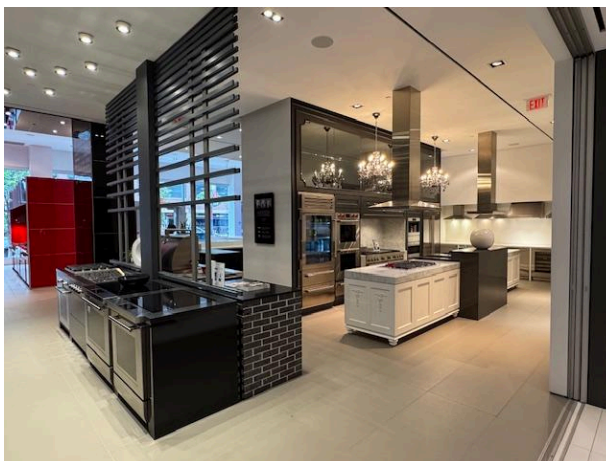
Window Installation

Barrier-free venue / wheelchair accessible from the street

**Description:** We have 4 large windows at the front of the showroom. Six TV screens and a sound system are available.

**Dimensions:** Each window is approximately 9' wide x 12' high. Approx 30" of floor space in front of the windows.

**Website:** <https://www.subzero-wolf.com>



## W22. Collective Arts Toronto

777 Dundas Street West

Window Installation

Barrier-free venue / wheelchair accessible from the street

**Description:** Two windows at the corner of Dundas and Markham Streets.

**Dimensions:**

North window (facing Dundas) 96" H x 48" W

East facing window (facing Markham): 96" H x 68" W

**Website:** <https://collectiveartscreativity.com/pages/toronto>



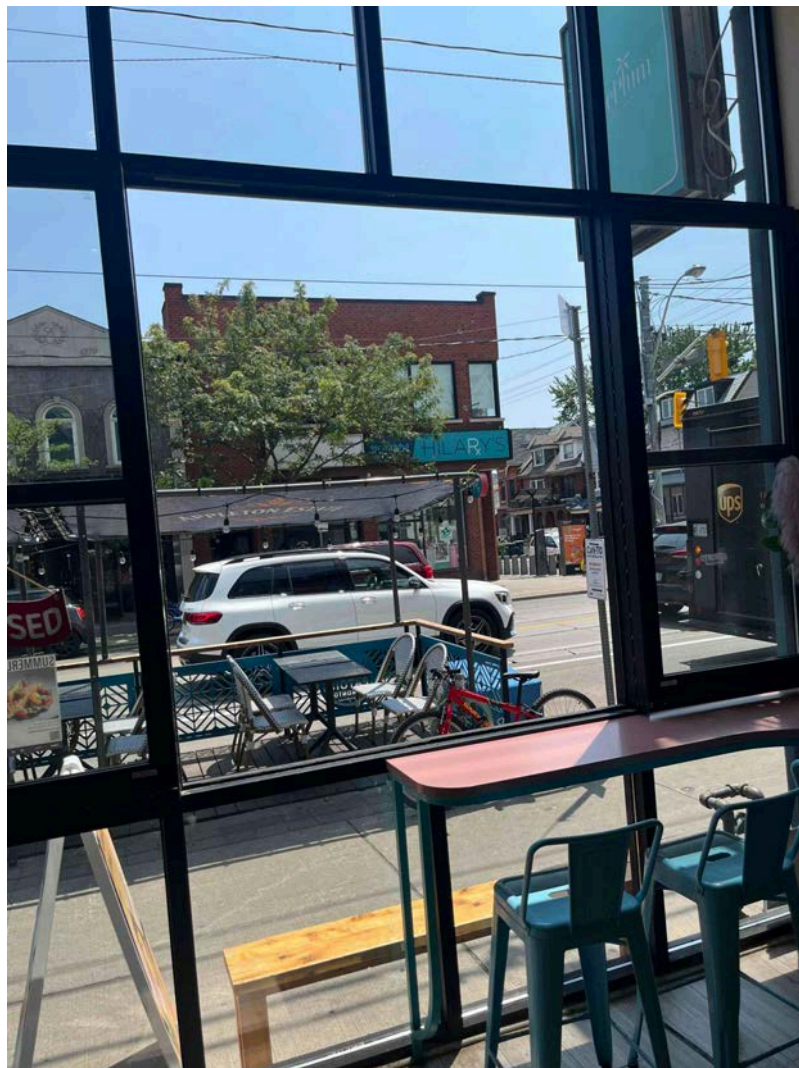
## W23. JunePlum by Patois

796 Dundas Street West  
Window Installation

**Description:** One large window facing Dundas Street.

**Dimensions:** 59" x 59"

**Website:** <https://www.juneplumtoronto.com/>



## W24. Souk and Silk

789 Dundas Street West  
Window Installation

**Description:** One large window facing Dundas Street.

**Dimensions:** 85" H x 44" W

**Website:** <https://www.instagram.com/soukandsilkshop/>



## W25. VdeV

797 Dundas Street West

### Window Installation

Barrier-free venue / wheelchair accessible from the street

**Description:** Two large windows facing Dundas Street.

**Dimensions:** East Window: 93" H x 80" W; West Window: 93" H x 83" W

**Website:** <https://www.vdevmaison.com>



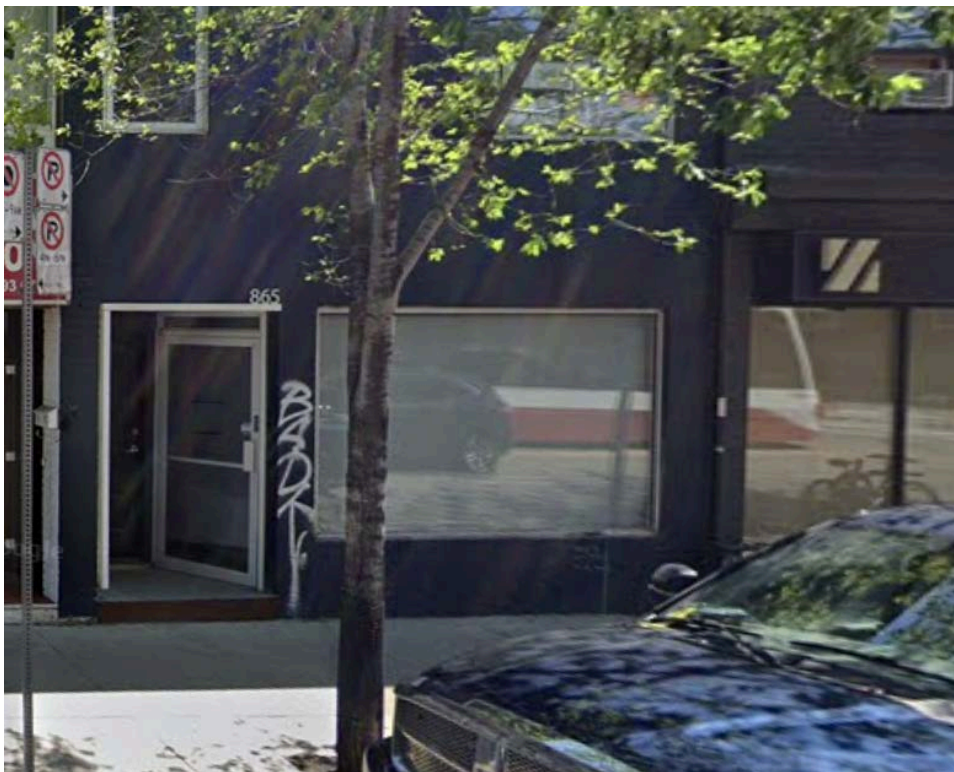
## W26. Dialogue 38 Inc.

865 Dundas Street West  
Window Installation

**Description:** One large window facing Dundas Street.

**Dimensions:** Window is 10'-0" x 6'-0" (18" from Floor) - Approx 8'-0" deep display area

**Website:** <https://www.dialogue38.com/>



## W27. gh3\*

55 Ossington Avenue, Toronto

### Window Installation

**Description:** Architecture studio storefront space on Ossington.

**Dimensions:**

window = 8'-0" wide x 9'-0" tall

transom window = 11'-6" wide x 3'-6" tall

space behind (interior) = 5' (D) x 8'-0" (W)

space in front (exterior covered) = 4'-10" (D) x 8'-0" W

**Preference:** Larger Installations / sculpture; it is a big window so we can accommodate something pretty large that fills the space.

**Website:** [gh3.ca](http://gh3.ca)



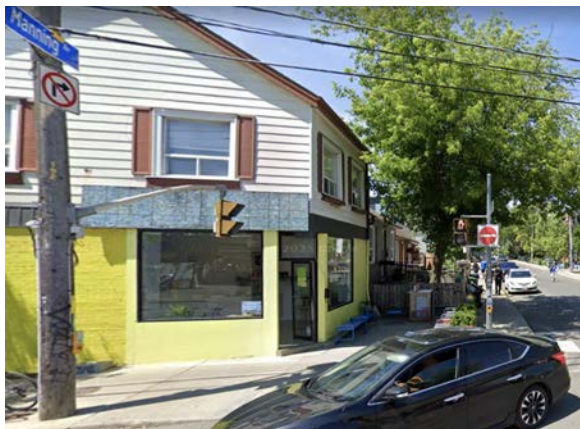
## W28. Carbonic Coffee

870 Dundas Street West

Window Installation

**Description:** Two windows in a coffee shop at the corner of Dundas and Manning. Each window is 91" wide x 77" tall.

**Website:** <https://carboniccoffee.netlify.app/>



## EVENT

An **event** runs one day during Festival Week, for a set period of time. For example, events can include a talk, tour, product launch, film screening, party, or workshop.

## V1. Intentionally Left Blank

## V2. ARD Outdoor Showroom

3019 Dufferin

Event

Barrier-free venue / wheelchair accessible from the street

**Description:** The showroom has two floors that are 13,000 sq. ft. Can accommodate up to 200 people, with plenty of seating available

**Preference:** Prefer any event attended by Architects and Interior Designers

**Website:** [www.ardoutdoor.com](http://www.ardoutdoor.com)



# V3. University Club of Toronto

380 University Avenue

## Event

Barrier-free venue / wheelchair accessible from the street

**Description:** On the second floor, there are two rooms connected by a long hallway, referred to as the Library and the Ballroom.

### Standing Capacity:

- Library: 75–90 people
- Ballroom: 120–150 people
- Full upper floor (with setup in all rooms): 200–250 people

### Seated Capacity:

- Library: 50 people
- Ballroom: 120 people

### Dimensions:

Library: 20 ft x 44 ft

Ballroom: 32 ft x 46.25 ft

**Website:** [universitycluboftoronto.com](http://universitycluboftoronto.com)



## V4. The Drake Hotel

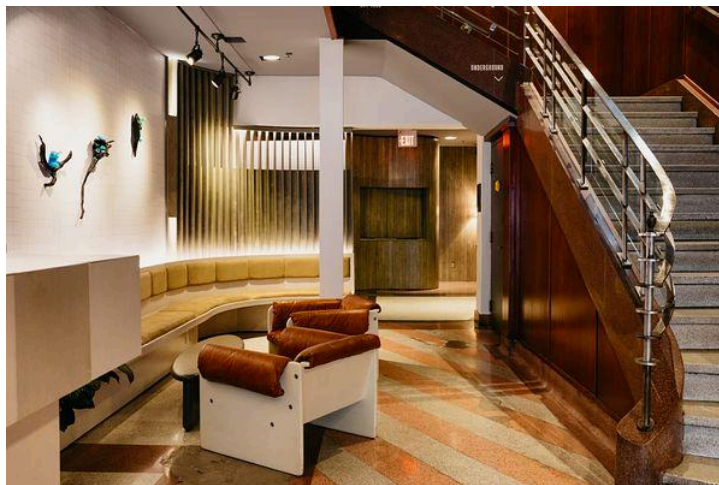
1150 Queen Street West

Event

Barrier-free venue / wheelchair accessible from the street

**Description:** Many different spaces are available within the building of varying sizes.

**Website:** [www.thedrake.ca](http://www.thedrake.ca)



## V5. STACKT market - Studio

28 Bathurst Street

### Event

Barrier-free venue / wheelchair accessible from the street

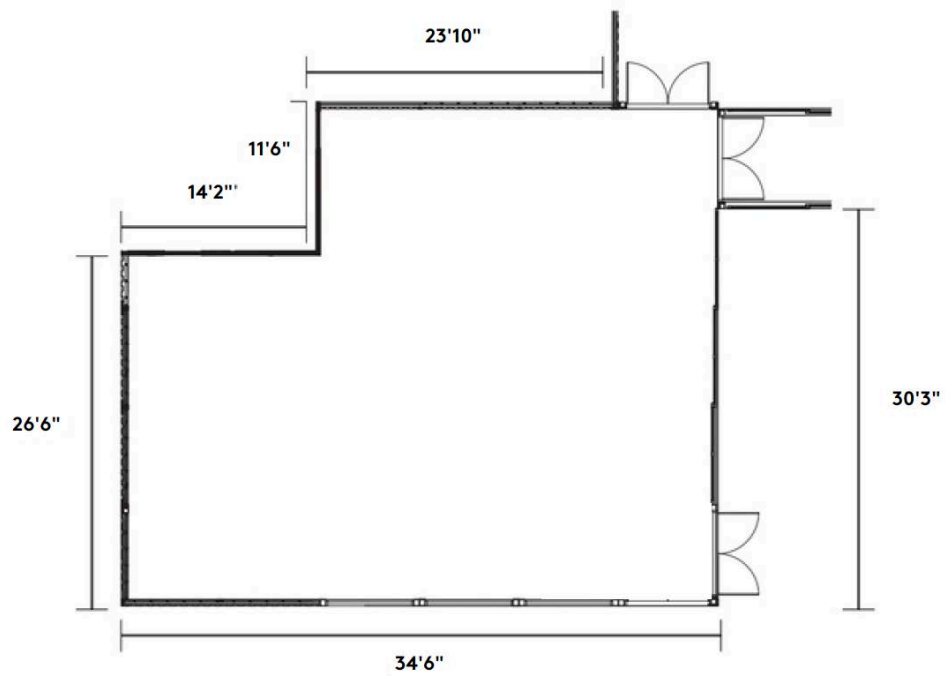
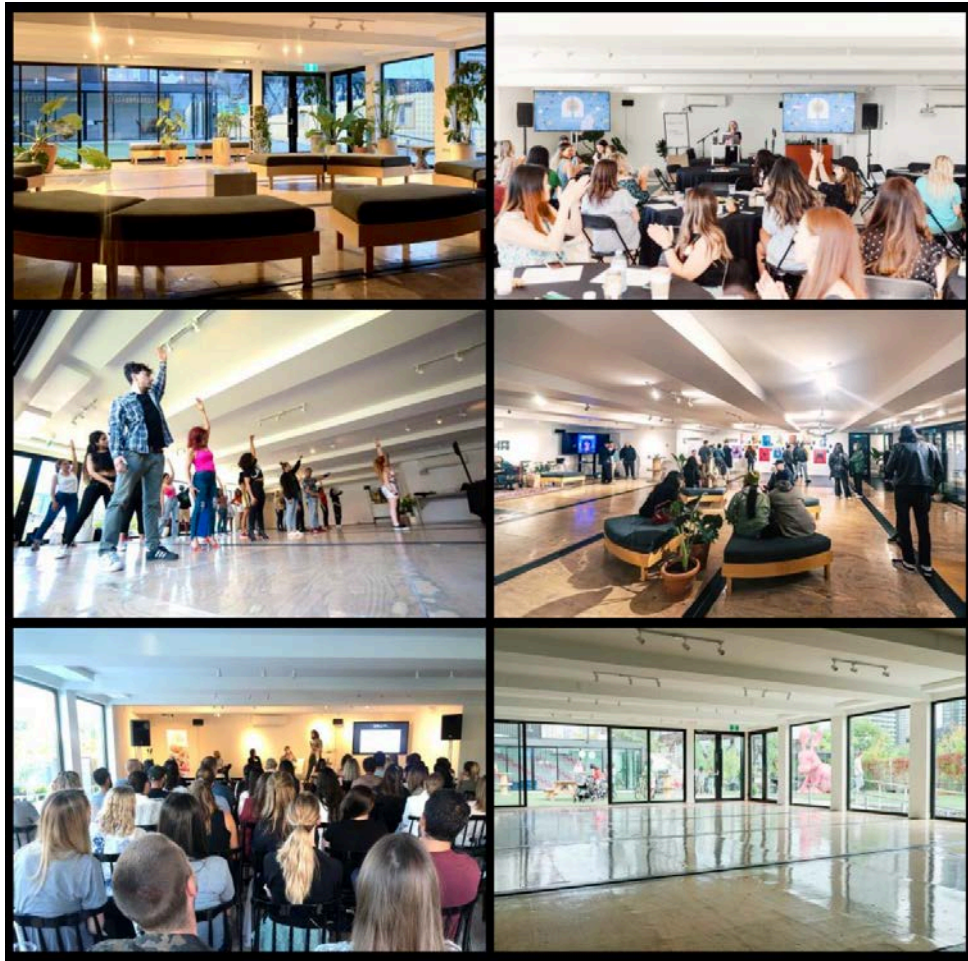
**Description:** STACKT is a 100,000 square foot community hub and public space. STACKT consists of 70,000 square feet of outdoor space and 30,000 square feet of indoor space. The Studio space is available for events during the DesignTO Festival. It is 1,600 square feet with over 80 ft of floor to ceiling windows for a bright environment with a vast amount of event opportunities. Space has a standing capacity of 100 people, dedicated WIFI, a bar, and access to power.

STACKT will be a hub of activity during the 2026 DesignTO Festival with multiple projects across the site. STACKT may have a site-wide event as part of the Festival.

STACKT is closed Mondays.

**Website:** <https://STACKTmarket.com/>





## V6. Humber Downtown

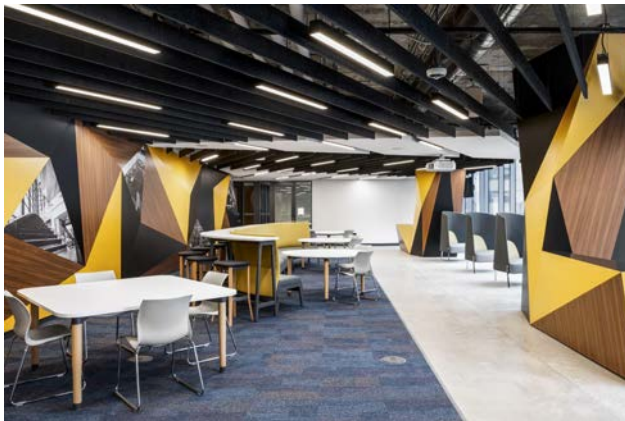
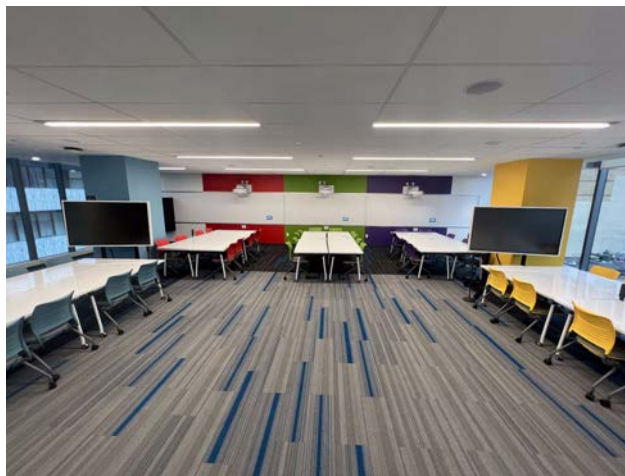
59 Hayden St., Unit 400

### Event

Barrier-free venue / wheelchair accessible from the street

**Description:** The space has a capacity of 200 (standing) and 150 (sitting). It offers equipment such as chairs and AV (projector, mics, sound board, camera, screens).

**Website:** <https://humber.ca/>



# V7. Hot House Restaurant

35 Church Street

## Event

Barrier-free venue / wheelchair accessible from the street

**Description:** Open to hosting all three formats or just one. The space comprises three interconnected event areas that can be used separately or combined into one larger venue. A floor plan with measurements can be provided upon request. The Private Room includes a built-in TV, and the venue also offers an in-house screen and projector. Approximate standing/seating capacity: 140 people.

**Website:** <https://www.hothouserestaurant.com/>



## V8. Nœud Atelier du Parquet Showroom

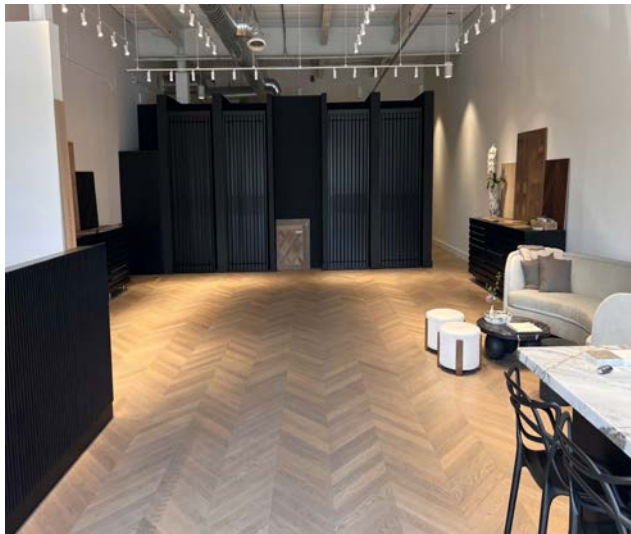
12 Wingold Avenue

Event

**Description:** The event could take the form of a party or a designer talk, depending on programming needs. The space is flexible and can be arranged to suit various event formats. It has a standing capacity of 60 to 100 people whereas a seated capacity of Approximately 20 people (expandable to 60+ with additional chairs for audience and presenters)

**Dimensions:** Approximately 2,000 sq ft

**Preference:** Host a party with DJ and drinks or host a design talk event with some panel discussion.



# V9. Crowns Lane

99 Crowns Lane

Event

Barrier-free venue / wheelchair accessible from the street

**Description:** The space can accommodate up to 50 people. A projector and sound system are available on-site, and chairs can be provided as needed to suit the event setup. Space designed by Alex Josephson of PARTISANS.

**Dimensions:** 56' 2½" L x 35' 3" W x 7' 5¾" H (Ceiling)



# V10. Smeg Store

2 Bloor Street West

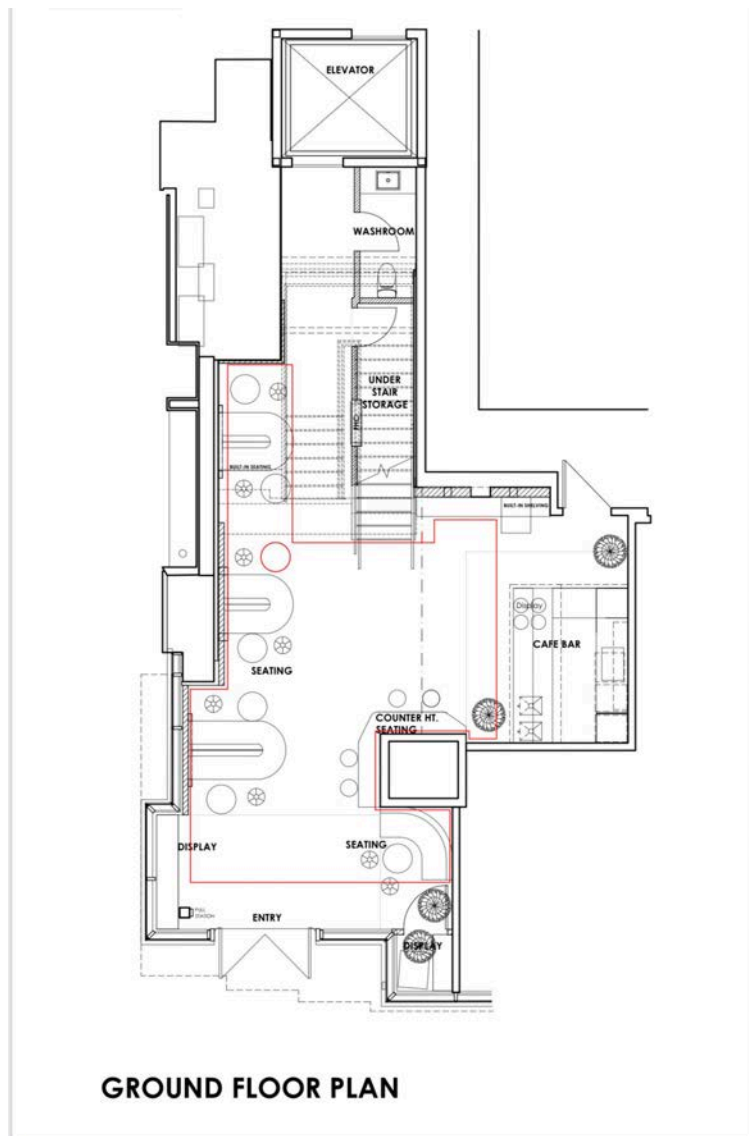
Event

Barrier-free venue / wheelchair accessible from the street

**Description:** The space will officially open on August 1, 2025. It features an elegant and modern interior design, making it a refined setting for a variety of events. It has a seated capacity of up to 35 people and standing up to 60 people.

**Preference:** Any product design or art that ideally can blend with SMEG products as part of it.

**Website:** [www.smeg.com/ca-en](http://www.smeg.com/ca-en)





# V11. Prema Coffee & Bar

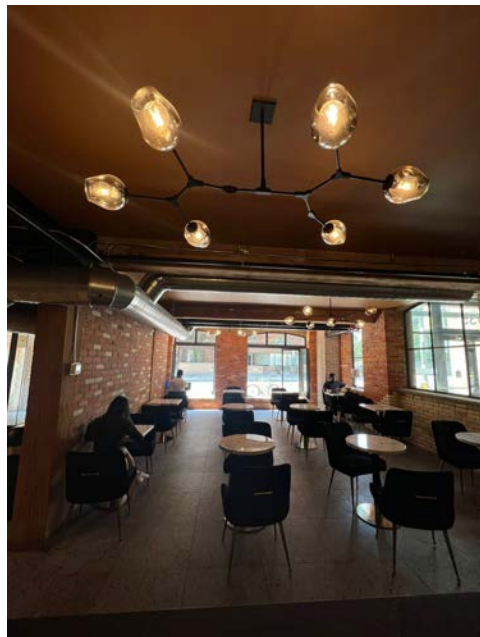
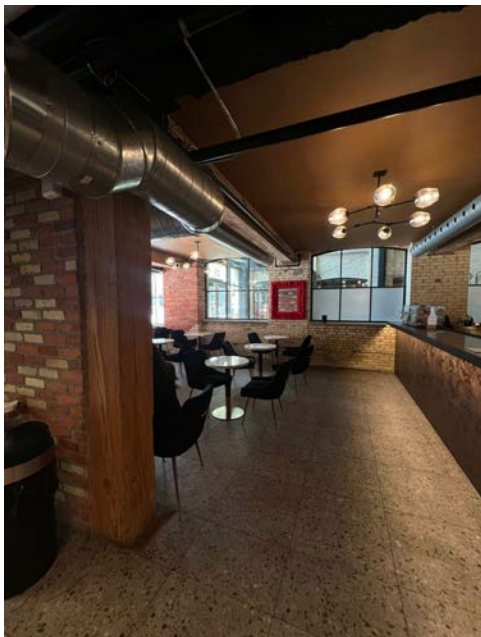
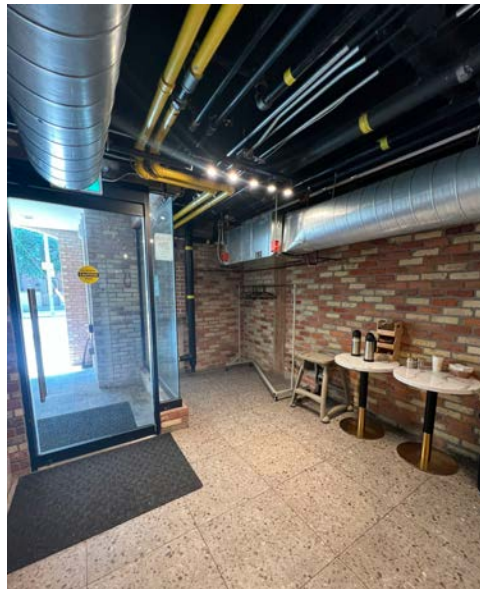
35 McCaul Street

## Event

Barrier-free venue / wheelchair accessible from the street

**Description:** This venue can accommodate 60+ people, the space consisting of a bar, main room, and hallway to wheelchair accessible washroom. The main room is about 240" x 180" and the hallway is about 420" x 150" inches containing a 20ft long sofa and 9ft long standing bar. There are a total of 29 chairs available, 2 windows in the main room able to open and a projector available. The main room also has 5 window ledges and a red mirror. Projector, projection screen, and Sonos speakers are available.

**Website:** <https://prematoronto.ca>



## EXHIBITION

An **exhibition** runs more than one day during Festival Week. It is open to the public during regular business/gallery hours, and may include a window component. It can start before Festival Week and/or end after Festival Week. It may also include an opening or closing reception, or artist/designer's talk.

# X1. STACKT market

28 Bathurst Street

## Exhibition

Barrier-free venue / wheelchair accessible from the street

**Description:** STACKT is a 100,000 square foot community hub and public space. STACKT consists of 70,000 square feet of outdoor space and 30,000 square feet of indoor space. The spaces have many windows, allowing for ample natural light as well as natural foot traffic from guests who walk by the area from STACKT's main path.

There are multiple exhibition opportunities available at STACKT. For each room, the walls and floors may be used. In some cases, pieces can be hung from the ceilings. Each space has a ceiling height of 9 feet.

STACKT hours are 12-8pm daily (closed Mondays); designers are asked to be on-site as much as possible throughout the course of their exhibition. Volunteers will be available to gallery-sit when designers are absent.

STACKT will be a hub of activity during the 2026 DesignTO Festival with multiple projects across the site. STACKT may have a site-wide event as part of the Festival.

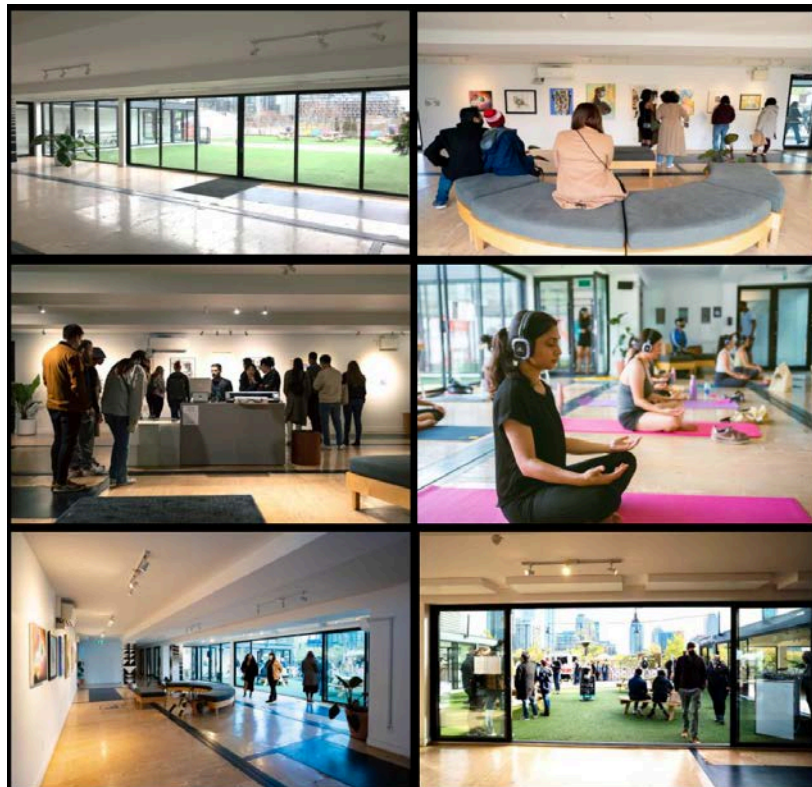
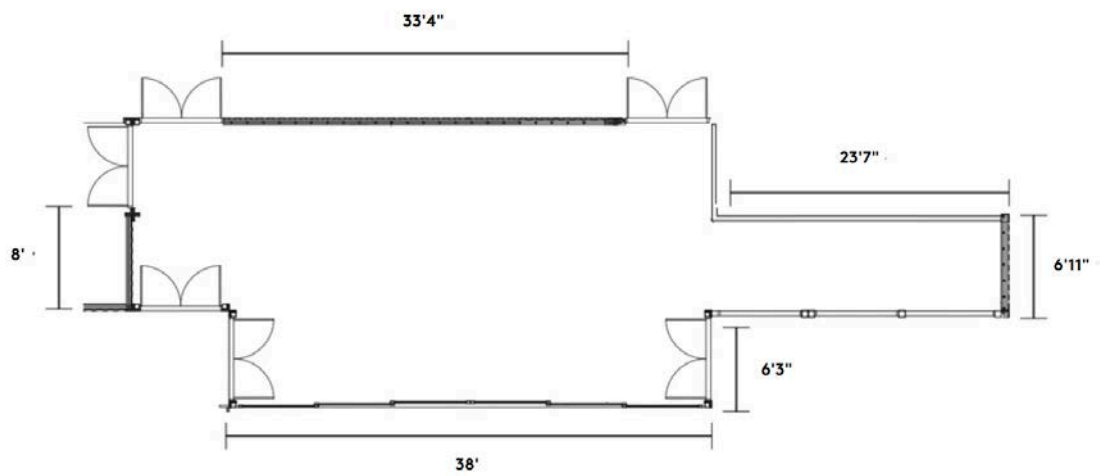
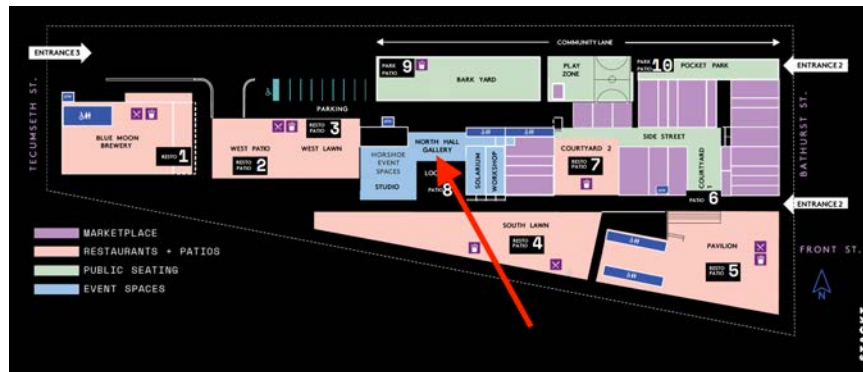
**Preference:** Large interactive pieces.

**Website:** <https://STACKTmarket.com/>

*See next page for details about individual spaces at STACKT >>*

## STACKT – North Hall Gallery:

760 square feet

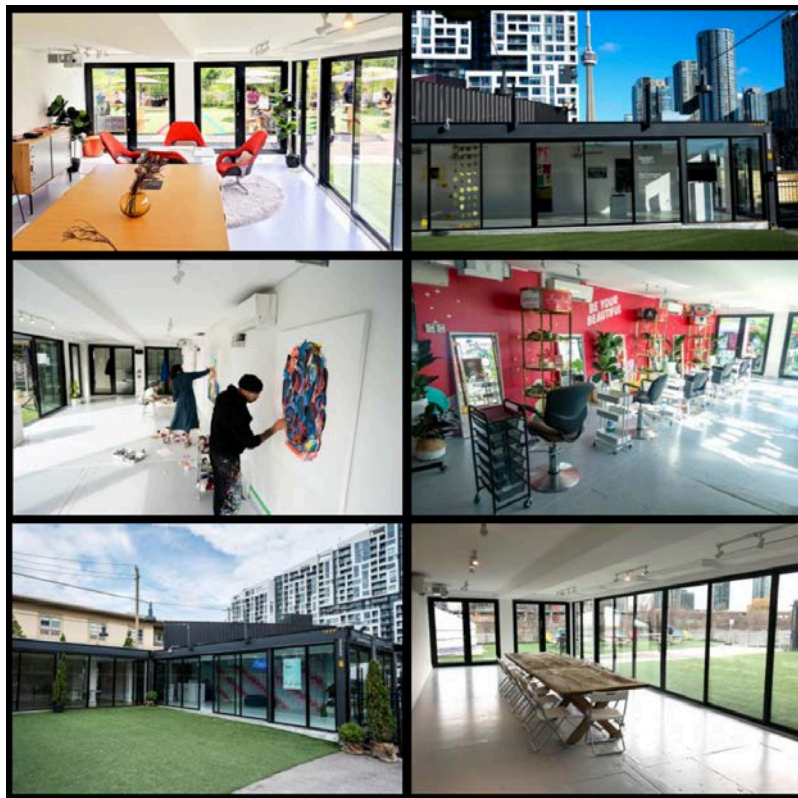
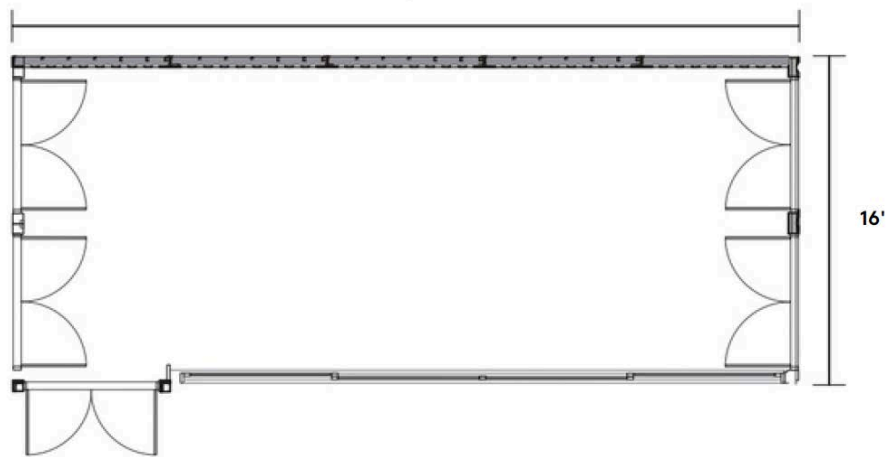


## STACKT – Solarium:

585 square feet

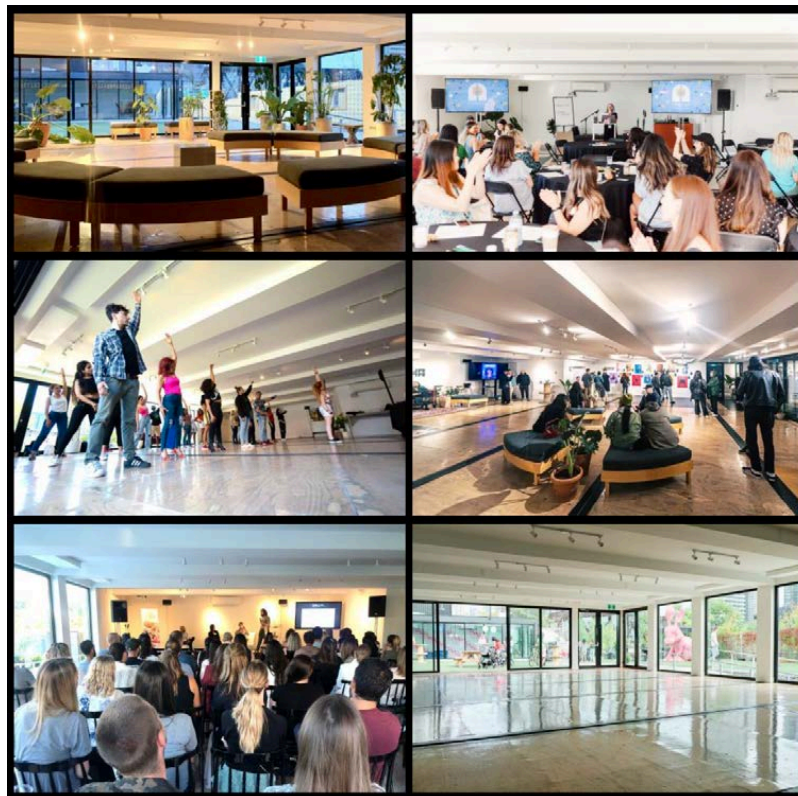
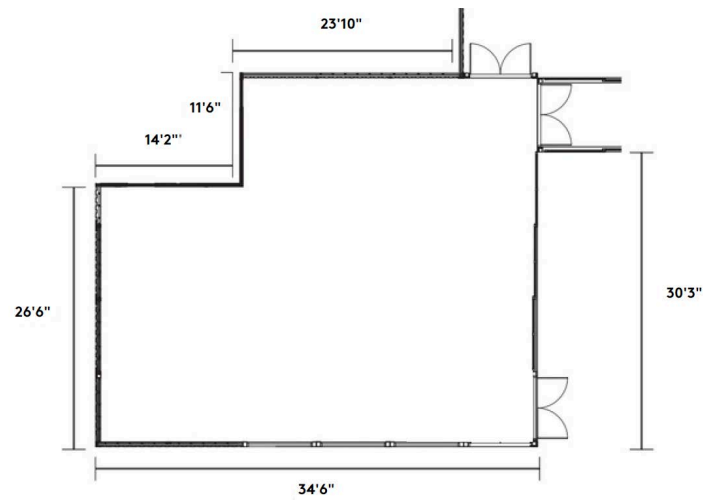


40'



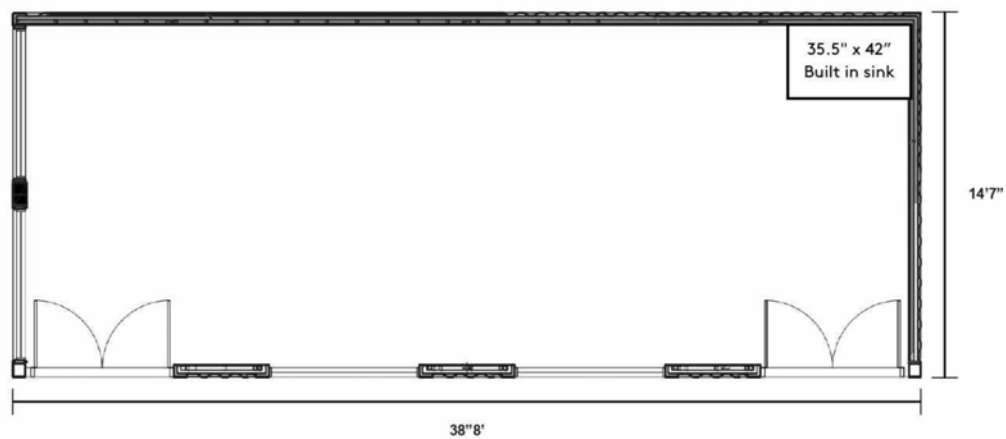
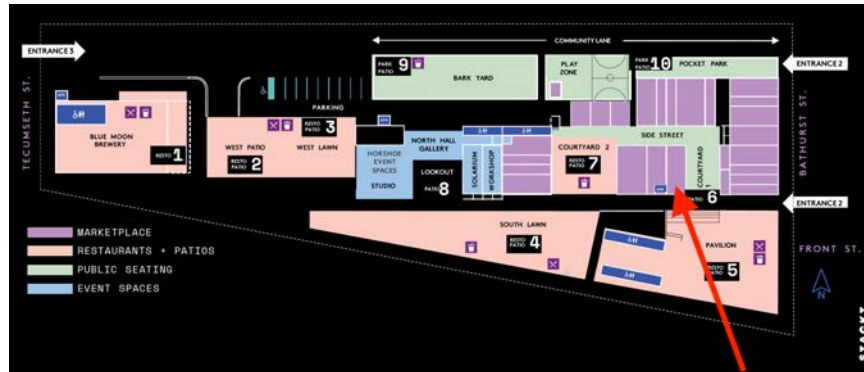
## STACKT – Studio:

1600 square feet



## STACKT – Unit 2-106:

Multiple windows, corner unit // multiple access points // direct sightlines from main gates // water access - single basin sink // unit comes turnkey with white walls, vinyl floors, HVAC, lighting + wifi and a sink



## X2. Urbanspace Gallery

111 - 401 Richmond West

### Exhibition

Barrier-free venue / wheelchair accessible from the street

#### Dimensions:

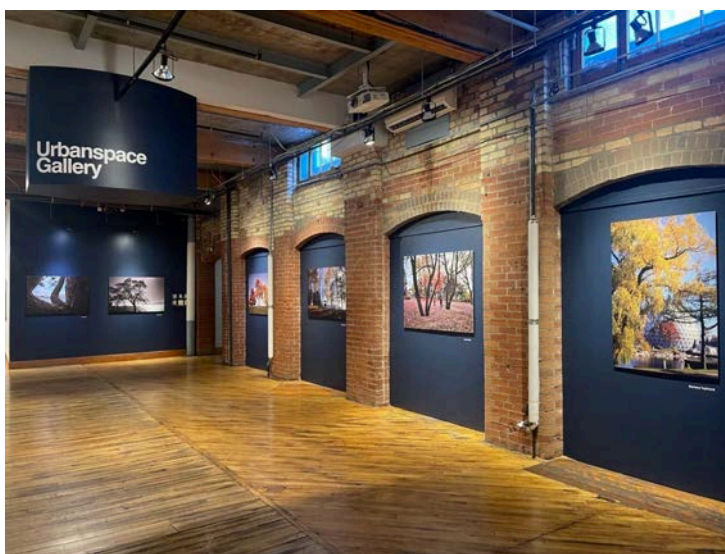
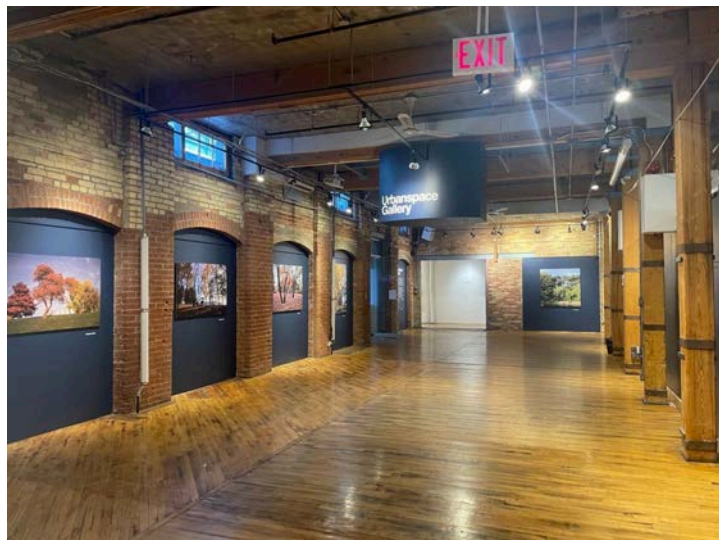
The 1000 sq ft main space = 56" L and 20" W

The floor-to-ceiling height is 13" with 8" H drywall sections between brick and beam piers.

A continuous 44ft wall runs off the main space along one side of an 8ft wide corridor, mirrored by five discreet segments.

**Preference:** The gallery has no attendant, so ideally work that considers this.

**Website:** [www.urbanspacegallery.ca](http://www.urbanspacegallery.ca)



## X3. The Drake Hotel

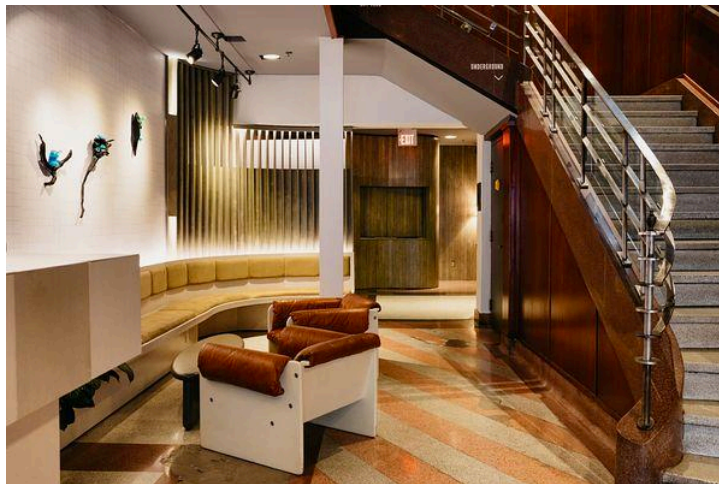
1150 Queen Street West

Exhibition

Barrier-free venue / wheelchair accessible from the street

**Description:** Many different exhibition spaces are available within the building of varying sizes.

**Website:** [www.thedrake.ca](http://www.thedrake.ca)



# X4. Youngplace Hallway Galleries

180 Shaw Street

## Exhibition

Barrier-free venue / wheelchair accessible from the street

**Description:** The first floor space features large vintage wooden vitrines in various sizes. Lighting is fixed and non-adjustable. The second floor includes prepared drywall walls, flexible lighting, and a selection of white and wooden plinths in various sizes.

### Dimensions:

Ceiling height: 14 ft

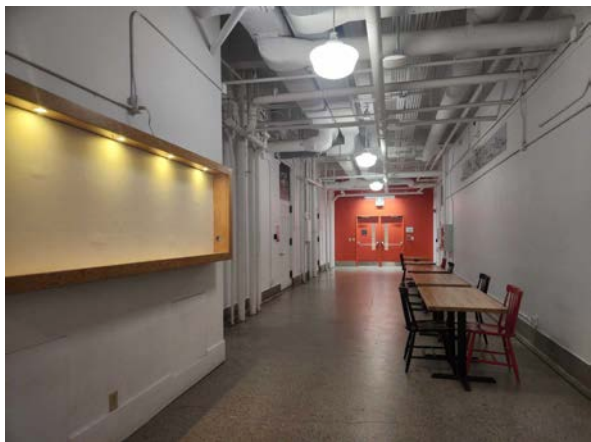
Hallway length: 156 ft

Hallway depth: 13 ft 10"

Height to infrastructure (e.g., pipes): 10 ft

**Preference:** All work must be family-friendly. Overtly photographed nudity, violent or graphic imagery, and depictions of sexual acts will not be permitted for exhibition.

**Website:** <https://youngplace.ca/>



## X5. Evergreen Brick Works

300-550 Bayview Avenue

Exhibition

Barrier-free venue / wheelchair accessible from the street

**Description:** The site is varied and multifaceted. Many of the spaces can be viewed via virtual tour: <https://www.evergreen.ca/evergreen-brick-works/host-your-event/event-spaces/>

**Preference:** Ideally, work that aligns with their mandate around green, climate-ready public programming that benefits the health of people and our planet

**Website:** <https://www.evergreen.ca/evergreen-brick-works/>



# X6. Euro Tile & Stone Showroom

80 Dufflaw Road

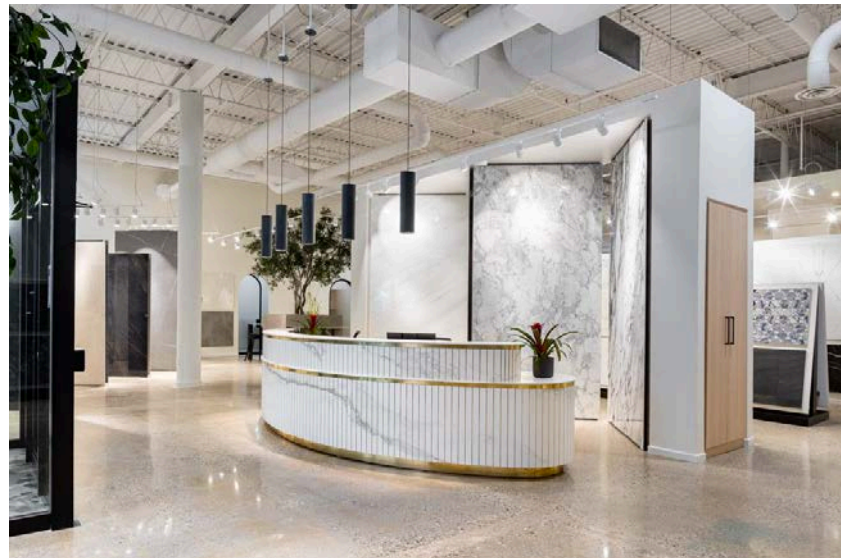
Exhibition

Barrier-free venue / wheelchair accessible from the street

**Description:** The space totals approximately 17,000 sq. ft. Please note that it is not entirely open, as it includes displays, tables, fixtures, and other installations. However, it provides a striking and dynamic backdrop for showcasing artwork.

**Dimensions:** 100 ft x 170 ft

**Website:** <https://eurotilestone.com>



# X7. Novotel Toronto Centre

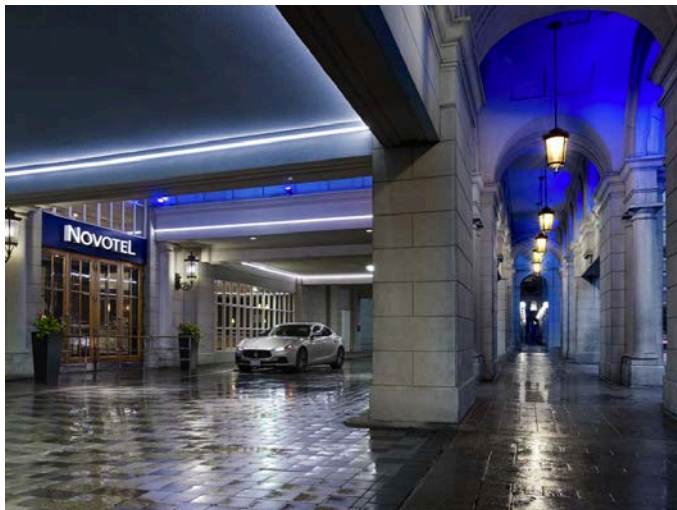
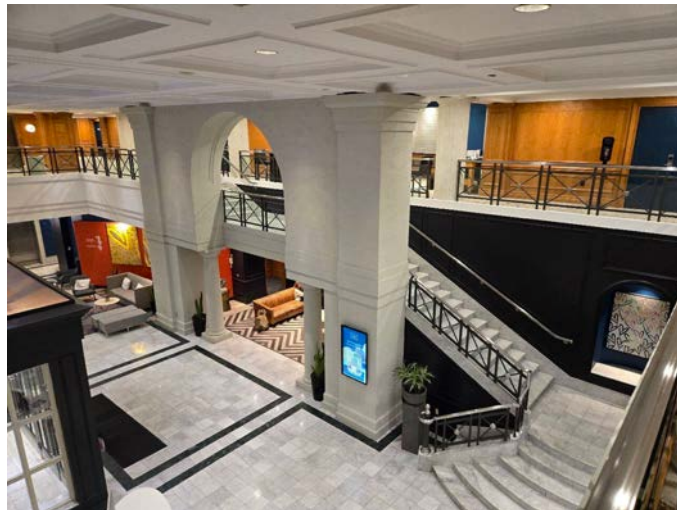
45 The Esplanade

Exhibition

Barrier-free venue / wheelchair accessible from the street

**Description:** Ideally, the floors would be used; however, walls or windows can also be considered, provided the installation does not damage the surfaces and is easy to remove. Exact dimensions can be measured at a later date, as they are not readily available, but the team is flexible and open to utilizing a significant portion of the lobby space.

**Website:** <https://novoteltorontocentre.com/>



# X8. Design Exchange

234 Bay Street

Exhibition

Barrier-free venue / wheelchair accessible from the street

**Description:** Two immersive spaces

**Dimensions:** Trading Floor: 45 ft x 270 ft surface

Gallery with two 15 ft x 60 ft surfaces

**Preference:** No preference but likely digital art of products that could benefit from being in an immersive setting. Possibility to host two separate exhibits (one in the Trading Floor, one in the Gallery).

**Website:** <https://designexchangetoronto.com/>



## X9. Humber Downtown

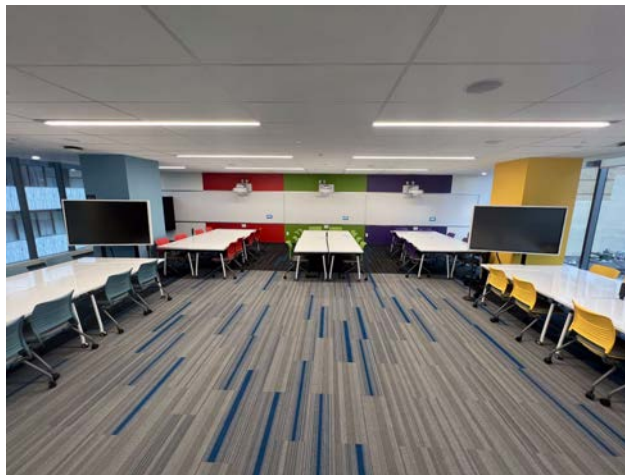
59 Hayden St., Unit 400

Exhibition

Barrier-free venue / wheelchair accessible from the street

**Description:** The space has a capacity of 200 (standing) and 150 (sitting). It offers equipment such as chairs and AV (projector, mics, sound board, camera, screens).

**Website:** <https://humber.ca/>



# X10. Hot House Restaurant

35 Church Street

Exhibition

Barrier-free venue / wheelchair accessible from the street

**Description:** Open to hosting all three formats or just one. The space comprises three interconnected event areas that can be used separately or combined into one larger venue. A floor plan with measurements can be provided upon request. The Private Room includes a built-in TV, and the venue also offers an in-house screen and projector. Approximate standing/seating capacity: 140 people.

**Website:** <https://www.hothouserestaurant.com/>



# X11. Relative Floors & Walls

68 Tycos Drive, Unit 6

Exhibition

Barrier-free venue / wheelchair accessible from the street

**Description:** The floor and ceiling areas are available

**Dimensions:** Size: 500/1000 sqft

Ceiling height: 18ft

**Website:** [www.relativefw.com](http://www.relativefw.com)



# X12. Daniels Spectrum Hallway Galleries

585 Dundas Street East

Exhibition

Barrier-free venue / wheelchair accessible from the street

**Dimensions:** 1st Floor Hallway Galleries/South Lobby: 15 foot ceilings, prepared drywall walls of various sizes, between 10-15 feet in length.

**Website:** <https://www.danielsspectrum.ca/>



# X13. Withrow Common Gallery

200 Princes' Blvd

## Exhibition

Barrier-free venue / wheelchair accessible from the street

**Description:** Withrow Common Gallery, an initiative of the Canadian National Exhibition Association (CNEA), is a vibrant art exhibition and community event space located at Toronto's Exhibition Place, across from the Princess Margaret Fountain.

Housed in a 2,675 sq. ft. venue within the historic Queen Elizabeth Building—an iconic example of 1950s mid-century Modernist architecture by Peter Dickinson—the gallery embodies a mission to celebrate creativity, foster community engagement, and honor the legacy of the space as a hub for learning and cultural exchange.

A mobile 75" TV, computer, gallery lighting, sound system, microphones, lectern, tables, chairs, and washroom are available.

**Dimensions:** We offer gallery B and C for designers to use. 450 sf for each. Please see attached gallery photos and floor plan.

**Preference:** We are especially interested in showcasing art and product designs that support or empower people with disabilities as part of our special programming during that time. During the festival period, from late January to early February, the gallery will host an exhibition featuring the work of a talented artist with a disability. Despite being a wheelchair user, she has an incredible passion for designing beautiful, eye-catching shoes, and her work reflects both creativity and resilience.

**Website:** <https://withrowcommon.ca>



# X14. Akb Architects

182D St. Helens Avenue

## Exhibition

Barrier-free venue / wheelchair accessible from the street

### Dimensions:

Window = 8" W x 7" H

Window sill height from finished floor = 9"

Window sill depth = 5.25"

Clear area behind the window = 8" W x 4" D

Ceilings = 16" H with exposed trusses, offering the opportunity for something to be suspended.

Viewing area in front of window = 18" W by 9" D

**Preference:** Interested in projects that relate to architecture or themes that engage with nature. Open to a wide range of artistic work. The space is particularly well-suited for pieces that can be suspended from a high ceiling or positioned near or directly on the floor. While this submission is intended for a window display, there is also openness to the possibility of hosting a small exhibition.

**Website:** <https://www.akb.ca>



## X15. Ace Hotel Toronto

51 Camden Street

Exhibition

Barrier-free venue / wheelchair accessible from the street

**Description:** Lobby Reception area or Interspace or downstairs space with projectors

**Website:** <https://acehotel.com/toronto/>

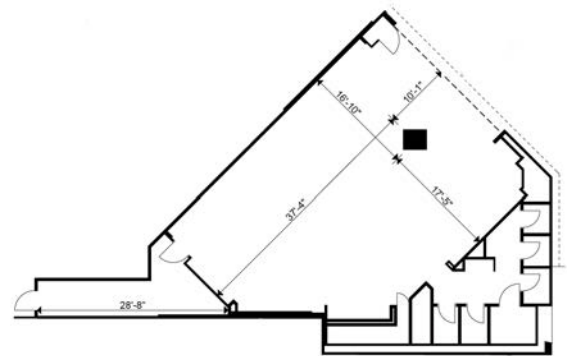
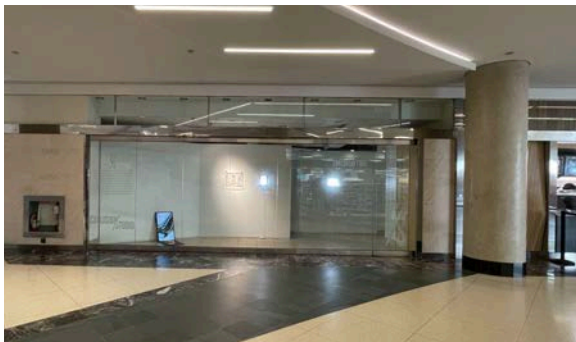


## X16. Collision Studios

Commerce Court (Concourse Level), 30 Wellington St West  
Exhibition

**Description:** 2,000 sq ft space in the concourse level (adjacent to the food court, Rexall) of Commerce Court in Toronto's Financial District.

**Preference:** A project that can run longer than the 10 days of the Festival.



## X17. Home Société

570 Adelaide Street East  
Exhibition

**Description:** 26' long wall with platform inside a furniture showroom in the King East Design District.

**Website:** <https://mustsociete.com>



# X18. Minimal Toronto Showroom

260 Richmond Street East, Suite 100

Exhibition

**Description:** Several free walls that can be utilized, along with 1 window area. The overall space is 2000sqf with 9' ceilings at the highest point, 7.5' at the lowest.

**Website:** [www.minimal-toronto.com](http://www.minimal-toronto.com)



# X19. Akasha Art Projects Inc.

204D Carlton Street

Exhibition

**Description:** Approx. 300 sq ft gallery in Cabbagetown. The gallery is a couple steps below street level and is approx. 20' x 15' with 7.5' ceilings. The floating window wall is 5' wide x 1' deep x 7' high.

**Website:** <http://www.akashaart.com>

